

MONTHLY MEMBERSHIP PROGRESS REPORT

District 201C2

Results as of: 3/31/2024

GMT:

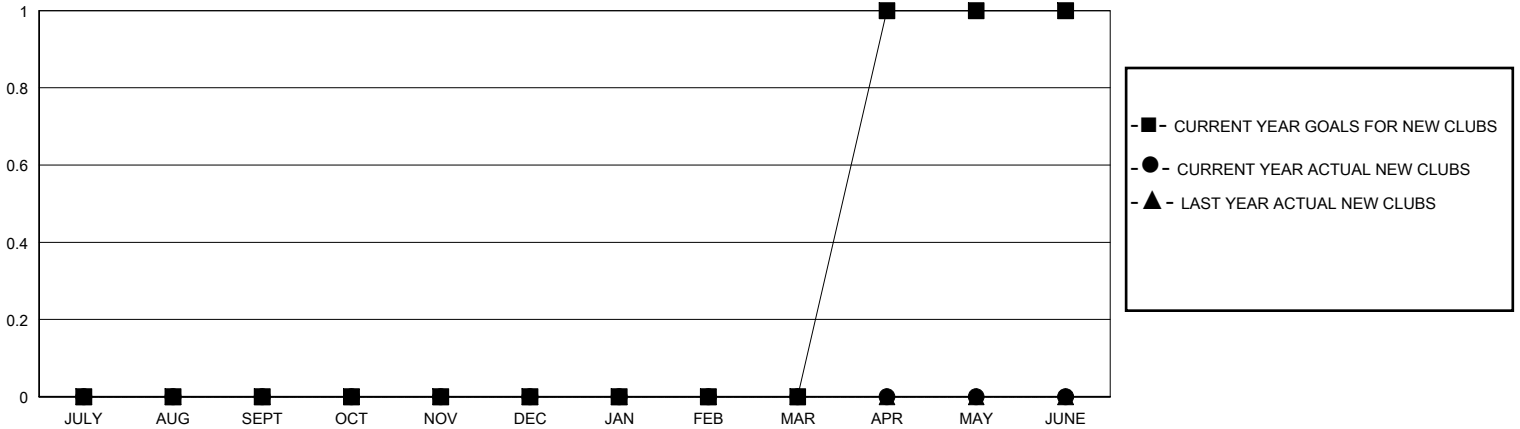
LOCATION AUSTRALIA

GMT CA

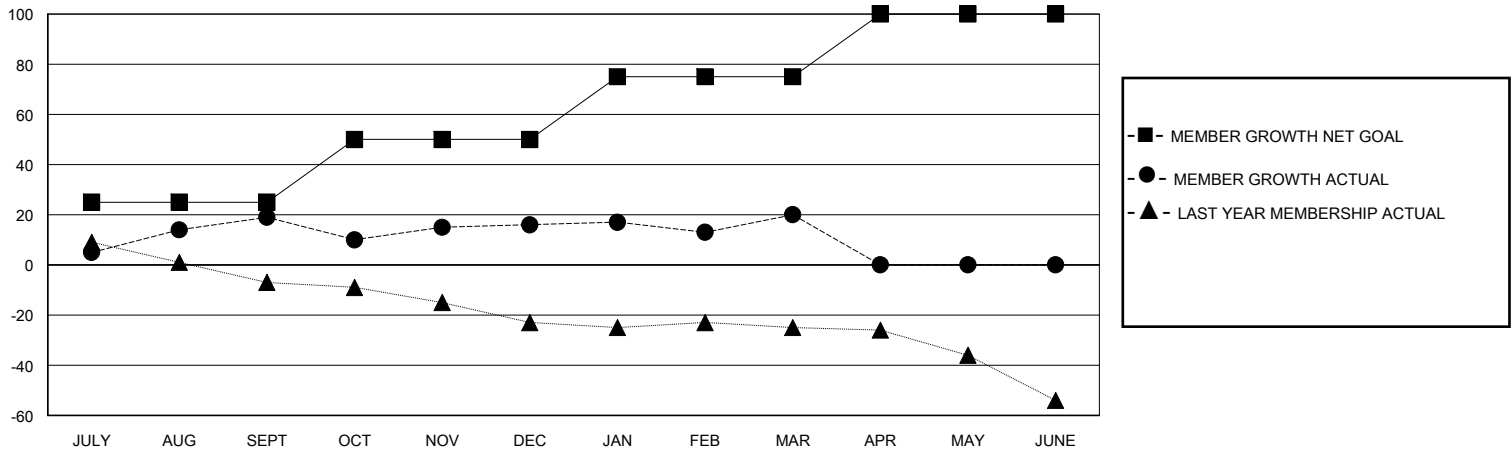
Clubs			
RESULTS FOR 2023-2024			
QUARTER	NEW CLUB GOAL	NEW CLUBS	DROPPED CLUBS
JULY/AUG/SEPT	0	0	1
OCT/NOV/DEC	0	0	0
JAN/FEB/MAR	0	0	0
APR/MAY/JUNE	1	0	0

Members			
RESULTS FOR 2023-2024			
QUARTER	MEMBER GROWTH NET GOAL	MEMBER GROWTH ACTUAL	DROPPED MEMBERS ACTUAL (including transfers)
JULY/AUG/SEPT	25	52	29
OCT/NOV/DEC	25	38	33
JAN/FEB/MAR	25	55	45
APR/MAY/JUNE	25	0	0

GOALS AND ACTUAL NEW CLUBS CUMULATIVE



GOALS AND ACTUAL MEMBERS CUMULATIVE



DROPPED CLUBS: 1

44 CLUBS OF 60 ADDED 1 OR MORE NEW MEMBERS

GENDER DISTRIBUTION

MALE 917 (62.89%)
FEMALE 541 (37.11%)

DROPPED MEMBERS

DECEASED	25
CLUB CANCELLED	0
OTHER	82
TOTAL	107

[CLICK HERE FOR CUMULATIVE MEMBERSHIP DATA](#)

TOTAL FAMILY UNIT MEMBERS	290
FAMILY MEMBERS PAYING HALF DUES	147